

# Sarasota Early Childhood



# Mental Health Partnership

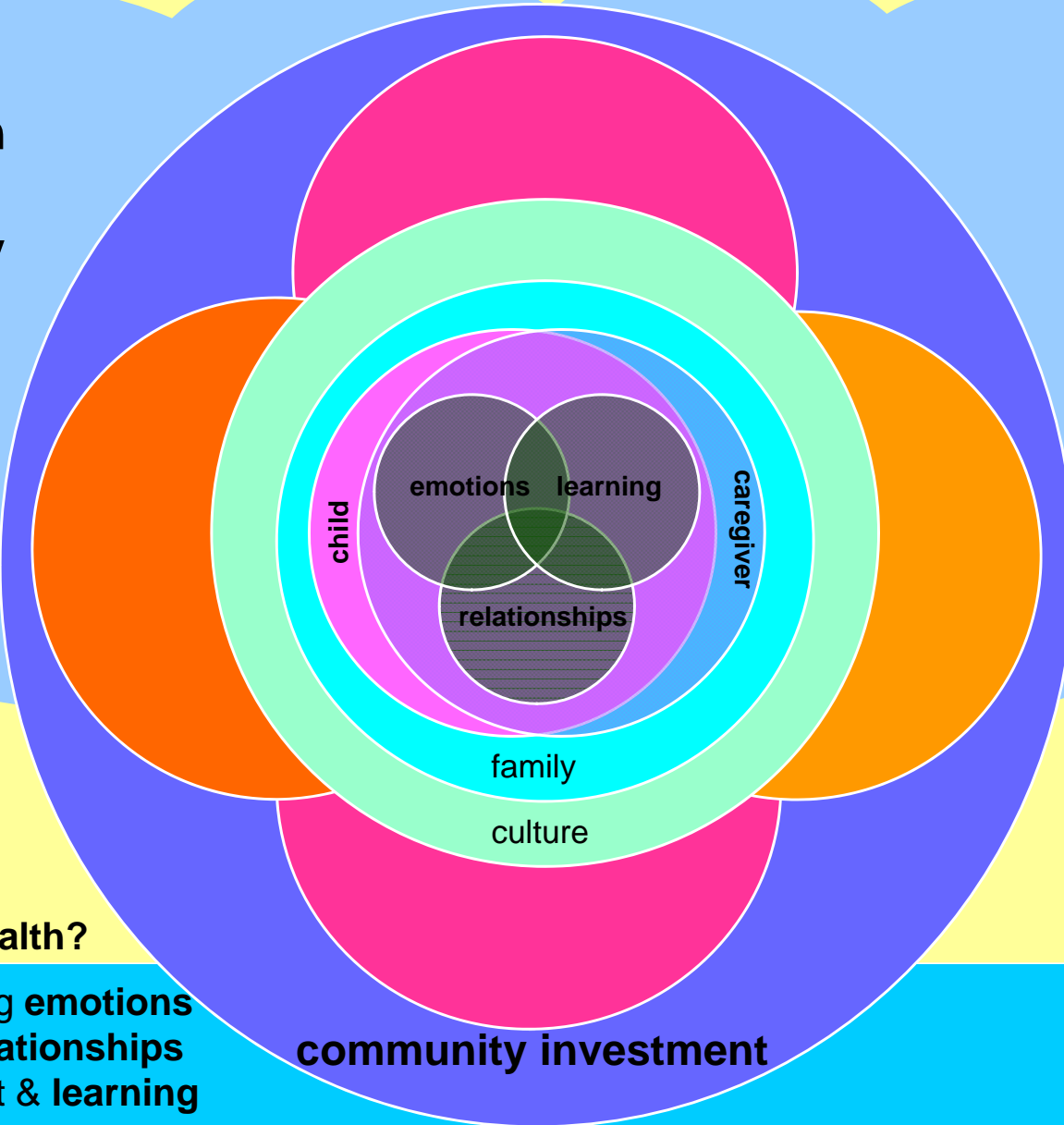
# Sarasota Early Childhood Mental Health Partnership

## VISION

All young children & their families are healthy, happy & thriving in Sarasota County communities

## MISSION

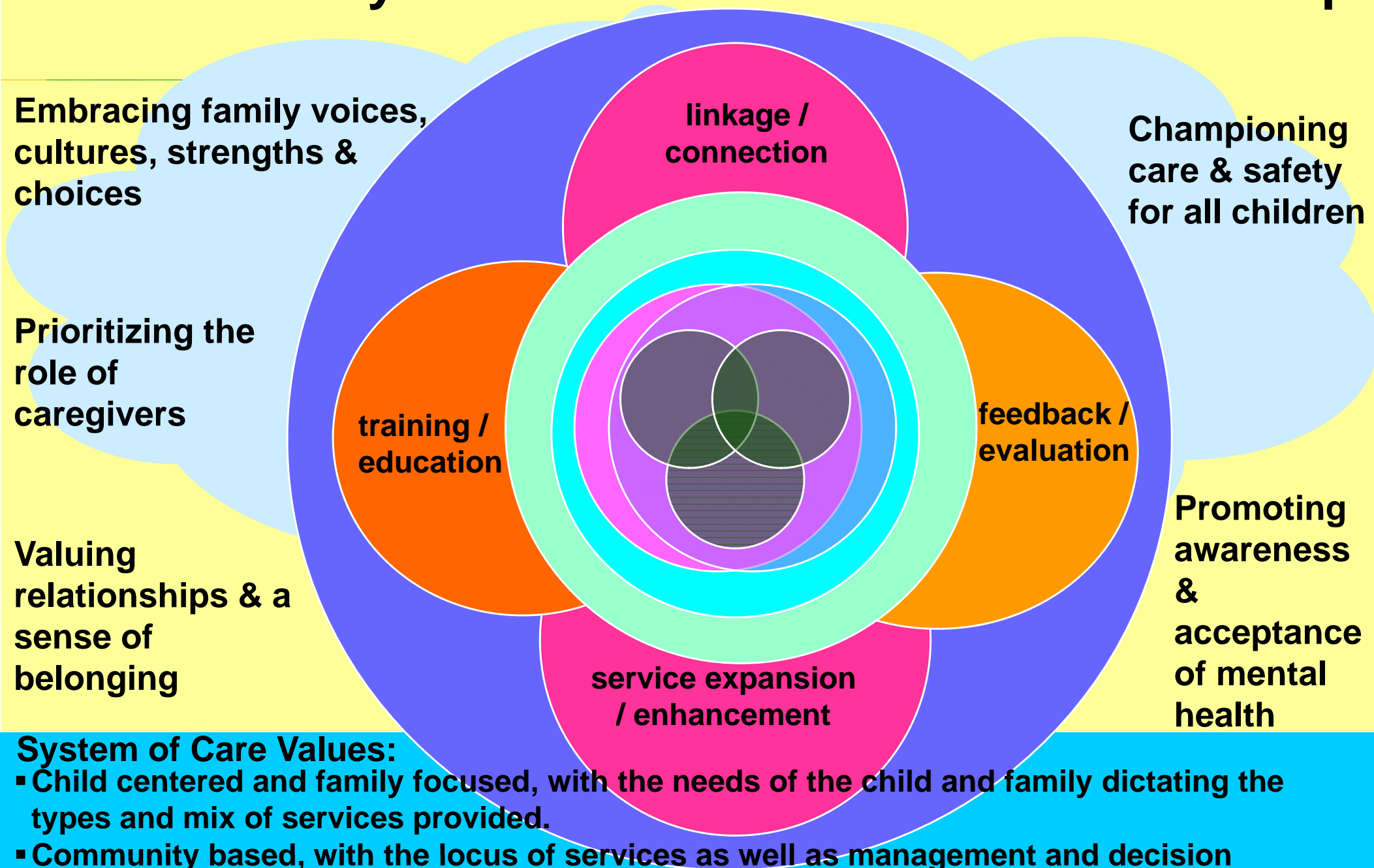
To strengthen Sarasota's system of care that supports early childhood mental health & well-being



...so what do we mean by early childhood mental health?

- Experiencing & expressing **emotions**
- Forming close, secure **relationships**
- Exploring the environment & **learning**
  - With **primary caregivers**
  - In a **family**
  - In a **cultural context**
  - In a **community**

# Sarasota Early Childhood Mental Health Partnership



## System of Care Values:

- Child centered and family focused, with the needs of the child and family dictating the types and mix of services provided.
- Community based, with the locus of services as well as management and decision making responsibility resting at the community level.
- Culturally Competent, with agencies, programs, and services that are responsive to the cultural, racial and ethnic differences of the populations they serve.

# Context

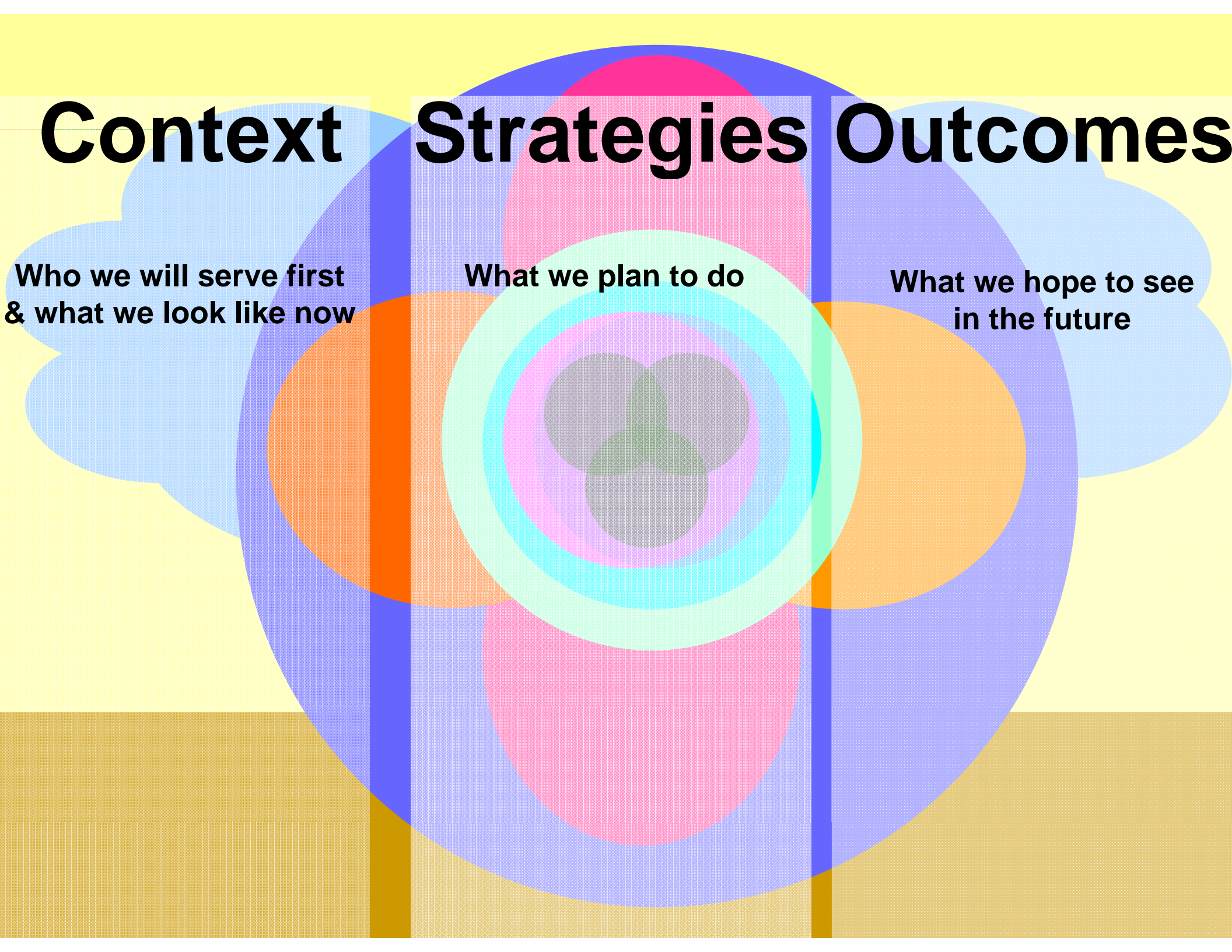
# Strategies

# Outcomes

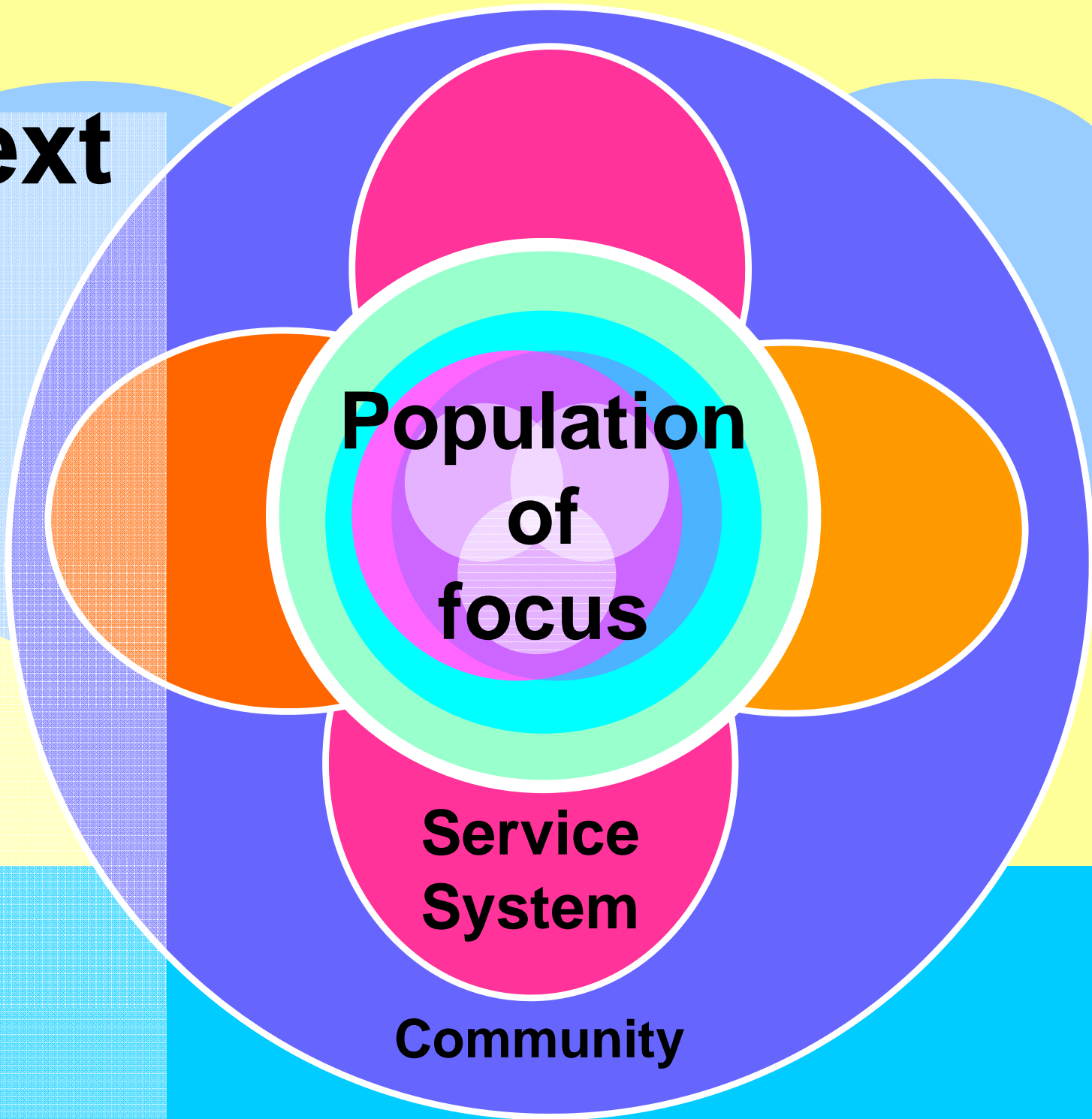
Who we will serve first  
& what we look like now

What we plan to do

What we hope to see  
in the future



**Context**



**Population  
of  
focus**

**Service  
System**

**Community**

# Context

## Population of Focus

Initial efforts will utilize SOC funds & local resources to focus on:

Children birth through age 8 & family members

at risk of **disrupted relationships** due to:

- foster care placement or risk of placement
- prenatal exposure to alcohol / other substances
- expulsion or risk of exclusion from an early learning and care setting &/or
- presence of other environmental stressors (i.e., domestic violence, poverty, caregiver mental illness)

- with DC: 0 – 3R or DSM-IV-TR diagnosis & prognosis that MH challenges will last at least one year
- in need of multi-agency interventions from at least 2 community service agencies

# Context

## Service System Profile

(Strengths / Challenges)

- Long standing early childhood professional expertise
- Many partnerships already established
- Interested educational institutions
- Gaps in service continuum (e.g. screening, referral, crisis stabilization, respite)
- Shortage of services/providers to address unmet needs of culturally diverse community
- Shortage of trained clinicians
- High rates of turnover in child care & case management
- Decreased funding for schools & child care

# Context

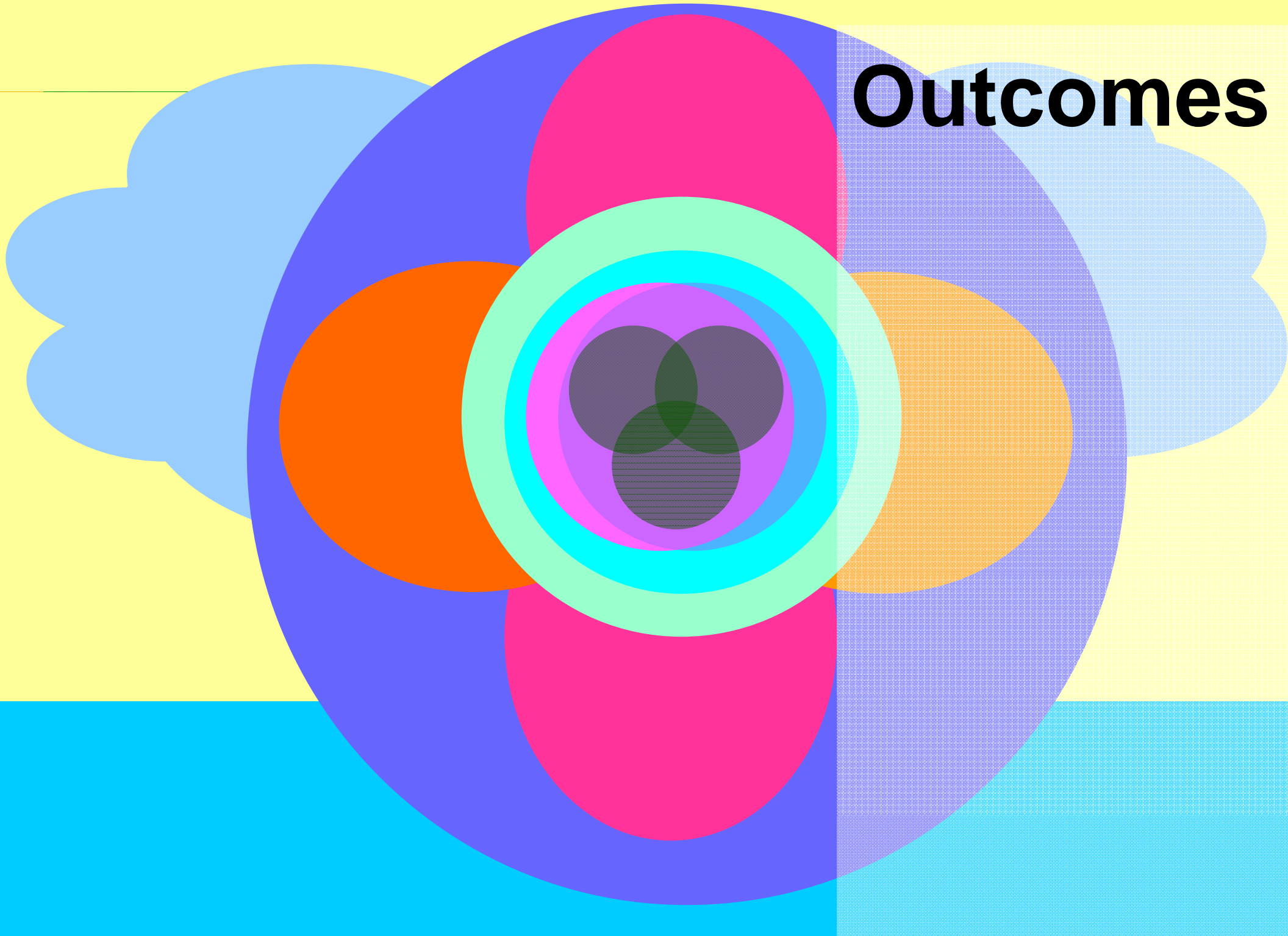
- **Established family networks**
- **Many active community partnerships**
- **Interested in mobilizing financial assets & social capital**
- **Geographic distinctions & access issues**

## Community Profile

(strengths/challenges)



# Outcomes



# Outcomes

## Children, Caregivers & Families

- **Children will function optimally in home, childcare, school & community (social-emotional skills & healthy relationships).**
- **Parents & other caregivers will have skills & support needed to promote social emotional skills of children.**
- **Families will be actively involved in classrooms, programs & the SOC.**
- **Reduced disruptions will occur in children's relationships with primary caregivers & family.**

# Outcomes

**Full range of services & supports will be:**

- Available
- Accessible
- Affordable
- High-quality
- Constantly improving
- Well-suited to families
- Effective

**Services &  
Programs**

# Outcomes

- Shared SOC identity will be developed.
- Collaborative relationships will form.
- Diversity will be supported.
- Requisite flow of resources will be sustained (including funding).

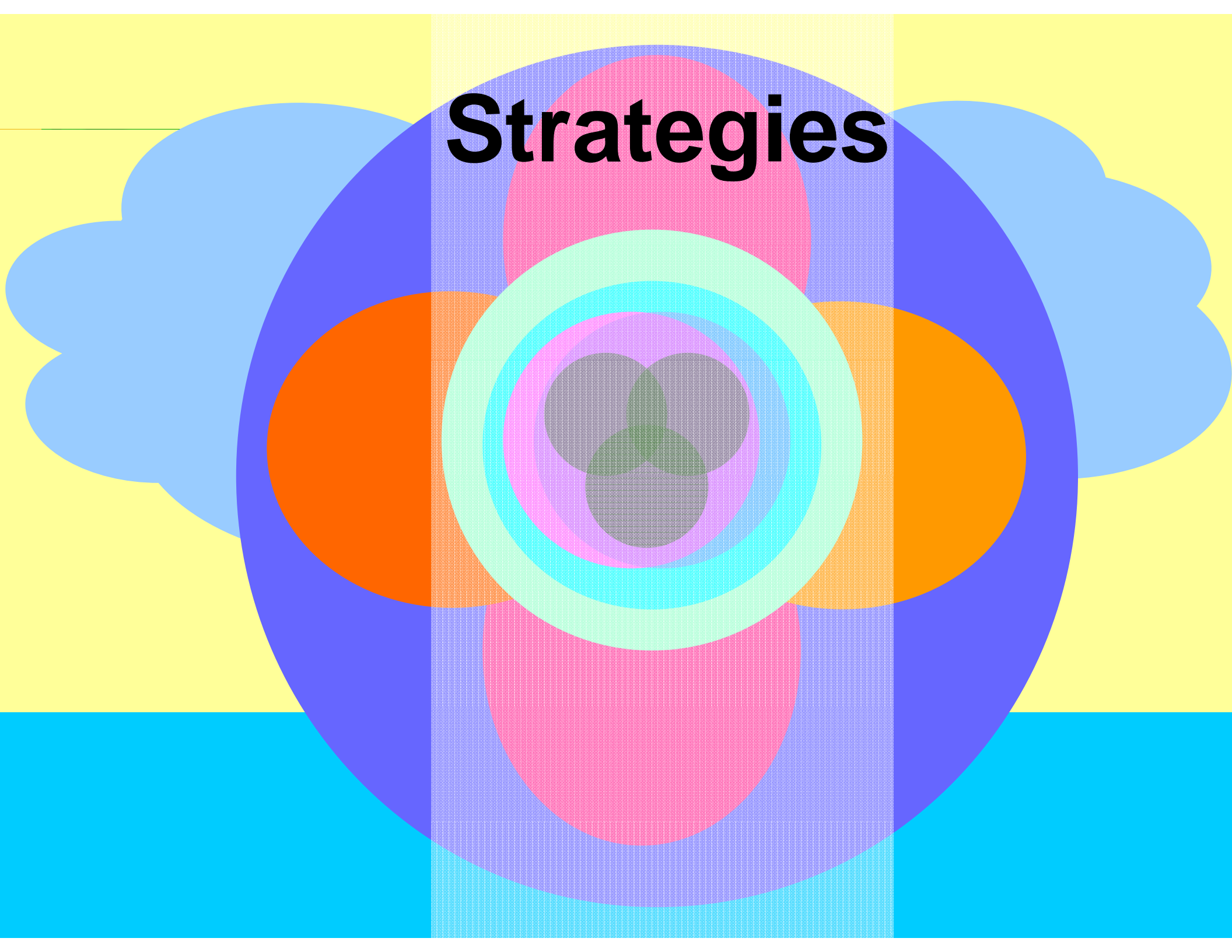
**Systems &  
SOC**

# Outcomes

- **Increased appreciation & valuing of early childhood mental health promotion**
- **Decreased stigma**

**Community**

# Strategies



# Strategies

linkage /  
coordination

training /  
education

feedback /  
evaluation

service  
expansion /  
enhancement



## **linkage / coordination**

Networks of people, services, and systems will be connected through relationships, structures, policies and processes.



## **linkage / coordination**

- Develop SOC shared identity
- Coordinate policies, databases & funding across orgs / systems
- Support through SOC infrastructure / governance
- Strengthen org/system cultural competence
- Utilize parents as consultants & advocates
- Coordinate social marketing & outreach
- “One stop shopping” screening process that is then accessible to parents & providers online
- Linkage with Sarasota 211
- Coordinate screening & referral
- Co-located & mobile services to increase access
- Wraparound care management

# Strategies

## **service expansion / enhancement**

The range of services and supports available in the community will be expanded, and existing services and supports will be continually improved.

# Strategies

## **service expansion / enhancement**

- Creation of an Advocacy Center
- MH consultation in ECE / [medical] settings
- Early Childhood MH screening, evaluation, care management & intervention consistent with Best Practices / EBP
- Interventions:
  - Positive Behavioral Support
  - Parent education
  - Crisis Intervention / disaster management
  - Substance Abuse & Domestic Violence services for caregivers/families
  - Dyadic psychotherapy
- Additional supports: child care & meals with services, transportation, respite, recreation, diversion programs, enhancements to housing resources
- “One Stop” Resource / Service Centers

# Strategies

## **training / education**

Education and training will be provided to develop awareness and skills to facilitate Early Childhood Mental Health throughout the community

# Strategies

## **training / education**

- Awareness Campaign at community & state levels
- Cross-sector training for MH, Childcare, ECE, CW, medical system, faith communities, school system, legal system, & parents
- Video [& live] coaching
- Parent Advocacy training
- Teacher training at university level
- Shared resources
- Emphasis on Best Practices / EBP with possible emphasis on PBS as unifying curriculum
- Development of Statewide Replication Plan
- Educate state government / legislators

# Strategies

linkage /

## **feedback / evaluation**

Ongoing sharing and coordination of information throughout the System of Care

t  
e

em

# Strategies

## **feedback / evaluation**

- Cross-sector sharing / coordination of information
- Paperless, electronic information system for information sharing
- Ongoing local evaluation
- National evaluation

# Sarasota Early Childhood Mental Health Partnership

## POPULATION OF FOCUS:

- Initial efforts will utilize SOC funds & local resources to focus on:  
Children birth through age 8 & family members at risk of **disrupted relationships** due to:
- foster care placement or risk of placement
  - prenatal exposure to alcohol / other substances
  - expulsion or risk of exclusion from an early learning and care setting &/or
  - presence of other environmental stressors (i.e. domestic violence, poverty, caregiver mental illness)
  - with DC: 0 – 3R or DSM-IV-TR diagnosis & prognosis that MH challenges will last at least one year
  - in need of multi-agency interventions from at least 2 community service agencies

## SERVICE SYSTEM PROFILE:

### (Strengths / Challenges)

- Long standing early childhood professional expertise
- Many partnerships already established
- Interested educational institutions
- Gaps in service continuum (e.g. screening, referral, crisis stabilization, respite)
- Shortage of services/providers to address unmet needs of culturally diverse community
- Shortage of trained clinicians
- High rates of turnover in child care & case management
- Decreased funding for schools & child care

## COMMUNITY PROFILE:

### (Strengths / Challenges)

- **Established family networks**
- **Many active community partnerships**
- **Interested in mobilizing financial assets & social capital**
- **Geographic distinctions & access issues**

## LINKAGE / CONNECTION

Networks of people, services, and systems will be connected through relationships, structures, policies and processes.

## SERVICE EXPANSION / ENHANCEMENT

The range of services and supports available in the community will be expanded, and existing services and supports will be continually improved.

## TRAINING / EDUCATION

Education and training will be provided to develop awareness and skills to facilitate Early Childhood Mental Health throughout the community.

## FEEDBACK / EVALUATION

Ongoing sharing and coordination of information throughout the System of Care.

## Children/Caregivers/Families

- Child functioning
- Parent / caregiver skills & support
- Primary caregiving / family relationships
- Family involvement

## Services & Programs

- Available
- Accessible
- Affordable
- High-quality
- Well-suited to families
- Effective

## Systems & the SOC

- Shared SOC identity
- Collaborative relationships
- Cultural diversity
- Sustainable flow of resources

## Community

- Early childhood mental health promotion
- Decreased stigma